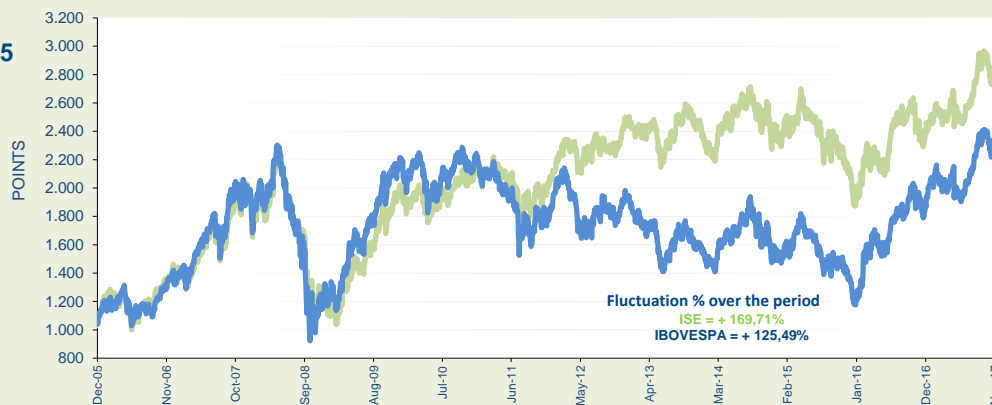
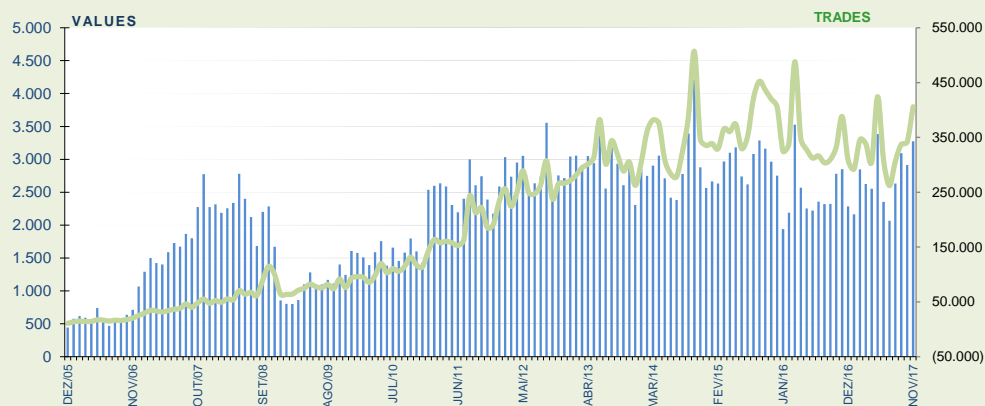


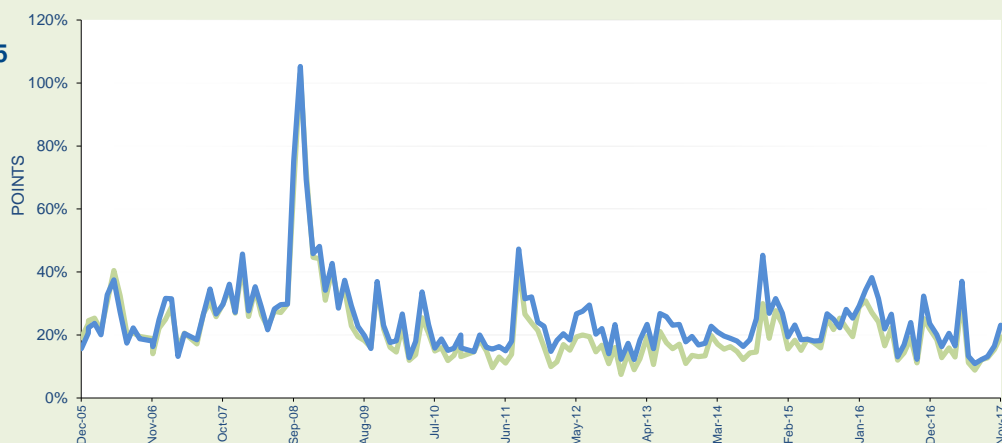
**ISE x IBOVESPA**  
1,000 points = November 30, 2005



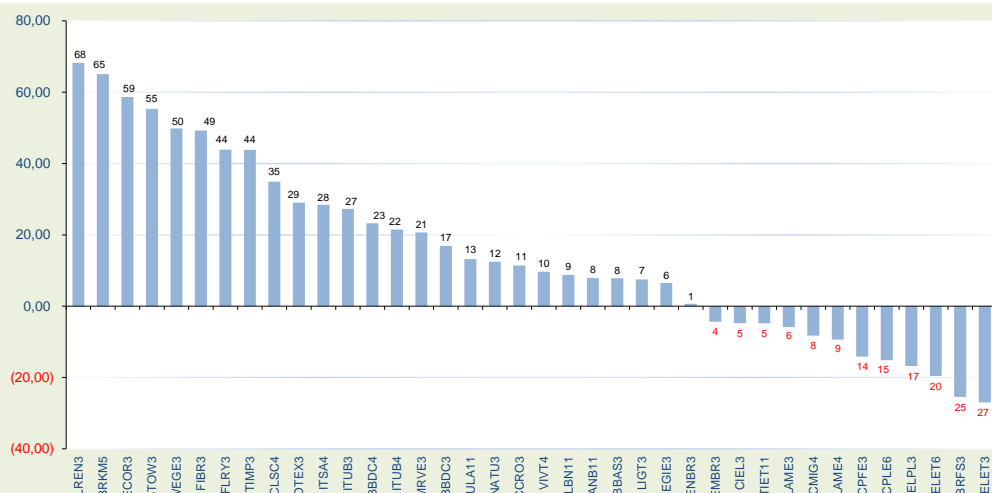
**AVERAGE DAILY VALUES  
(R\$ MILLION)  
AND NUMBER OF TRADES**



**ISE x IBOVESPA**  
1,000 points = November 30, 2005



**SHARE PERFORMANCE  
PAST 12 MONTHS  
(Dec/2016 to Nov/2017)**



THEORETICAL PORTFOLIO OF November 30, 2017					PERFORMANCE	
TICKER	NAME	TYPE	WEIGHTED %	MONTH Oct/2017	YEAR 2017	
TIET11	AES TIETE E	UNT	N2	1,119	1,89	-0,98
BTOW3	B2W DIGITAL	ON	NM	0,895	-19,03	72,56
BBDC3	BRADESCO	ON	N1	1,042	-7,28	15,90
BBDC4	BRADESCO	PN	N1	4,104	-5,81	25,26
BBA33	BRASIL	ON	EJ NM	1,627	-12,59	9,14
BRKM5	BRASKEM	PNA	N1	3,719	-13,29	32,55
BRFS3	BRF SA	ON	NM	9,667	-13,04	-20,25
CCRO3	CCR SA	ON	NM	5,497	-13,02	2,69
CLSC4	CELESC	PN	N2	0,129	-3,86	22,34
CMIG4	CEMIG	PN	N1	1,958	-14,62	-9,29
CIEL3	CIELO	ON	NM	7,908	2,32	1,48
CPL66	COPEL	PNB	N1	0,707	-7,68	-10,20
CPFE3	CPFL ENERGIA	ON	NM	3,374	-23,67	-16,02
DTEX3	DURATEX	ON	NM	0,785	-7,64	29,98
ECOR3	ECORODÓVIAS	ON	NM	0,694	0,54	52,11
ELET3	ELETRORBRAS	ON	N1	1,558	-15,06	-17,89
ELET6	ELETRORBRAS	PNB	N1	1,480	-15,71	-11,97
ELPL3	ELETROPOLULO	ON	NM	0,512	-51,00	-35,41
EMBR3	EMBRASER	ON	NM	3,512	-0,13	-0,97
ENBR3	ENERGIAS BR	ON	NM	1,216	-4,17	2,99
EGIE3	ENGIE BRASIL	ON	NM	2,128	0,44	9,08
FIBR3	FIBRIA	ON	NM	3,378	-13,70	45,12
FLRY3	FLEURY	ON	NM	2,515	-9,18	49,58
ITSA4	ITAUSA	PN	N1	1,725	-0,95	29,42
ITUB3	ITAUNIBANCO	ON	N1	0,515	-3,37	27,89
ITUB4	ITAUNIBANCO	PN	N1	5,564	-1,82	25,51
KLBN11	KLABIN S/A	UNT	N2	2,877	-4,73	4,16
LIGT3	LIGHT S/A	ON	NM	0,473	-11,93	-7,26
LAME3	LOJAS AMERIC	ON	N1	0,752	-15,37	-2,73
LAME4	LOJAS AMERIC	PN	N1	3,174	-15,64	-12,66
LREN3	LOJAS RENNER	ON	NM	7,409	-1,60	62,76
MRVE3	MRV	ON	NM	1,195	1,01	2,89
NATU3	NATURA	ON	NM	1,583	5,53	27,53
SANB11	SANTANDER BR	UNT		0,479	-5,84	27,32
SULA11	SUL AMERICA	UNT	N2	1,579	-0,22	16,38
VIVT4	TELEF BRASIL	PN		6,131	-5,98	12,32
TIMP3	TIM PART S/A	ON	NM	3,022	-2,15	52,49
WEGE3	WEG	ON	NM	3,998	7,52	49,85

MARKET CAPITALIZATION - November 30, 2017		
COMPANY	IN BRL	IN USD
ITAUNIBANCO	257.708.576.357	79.012.931.186
BRADESCO	192.523.934.074	59.027.450.967
SANTANDER BR	107.481.022.412	32.953.465.297
BRASIL	85.761.931.409	26.294.435.678
ITAUSA	76.362.180.080	23.412.490.827
TELEF BRASIL	75.406.122.531	23.119.365.505
CIELO	62.215.064.897	19.075.013.765
BRASKEM	36.963.615.312	11.332.970.110
WEG	36.936.398.379	11.324.625.453
CCR SA	31.976.600.000	9.803.961.246
BRF SA	31.263.970.506	9.585.470.476
TIM PART S/A	28.568.183.252	8.758.947.526
ELETRORBRAS	26.034.003.804	7.981.973.204
FIBRIA	25.021.227.960	7.671.458.168
LOJAS RENNER	24.200.069.691	7.419.692.694
ENGIE BRASIL	23.126.655.863	7.090.586.173
LOJAS AMERIC	22.219.522.023	6.812.460.762
CPFL ENERGIA	21.366.030.519	6.550.781.984
KLABIN S/A	18.927.919.426	5.803.262.027
NATURA	12.574.936.938	3.855.450.374
EMBRASER	11.588.277.939	3.552.942.709
CEMIG	9.593.634.172	2.941.388.942
ENERGIAS BR	8.374.535.437	2.567.615.721
FLEURY	8.270.638.796	2.535.761.220
B2W DIGITAL	7.796.133.806	2.390.278.945
SUL AMERICA	7.051.414.442	2.161.949.486
ECORODÓVIAS	6.721.149.932	2.060.691.051
DURATEX	6.108.457.144	1.872.840.674
MRV	5.929.264.781	1.817.900.657
COPEL	5.831.726.316	1.787.995.559
AES TIETE E	5.158.718.827	1.581.652.817
LIGHT S/A	3.283.338.366	1.006.664.939
ELETROPOLULO	2.677.502.192	820.916.787
CELESC	820.635.474	251.605.186
<b>TOTAL = 34</b>	<b>1.285.843.393.055</b>	<b>394.236.998.116</b>

VARIACÃO %	NO MÊS	NO ANO	12 MESES	ACUM.
ISE	-6,10	11,91	10,29	169,71
IBOVESPA	-3,15	19,50	16,26	125,50
IGC	-3,21	22,70	20,99	218,42
IBRX 50	-3,21	19,41	16,06	160,97

OVER THE PAST 12 MONTHS	
TICKER	VOLATILITY
ELET3	66,457
ELET6	55,032
BTOW3	53,758
CMIG4	48,795
LIGT3	48,790
DTEX3	40,813
BBA33	39,911
NATU3	39,061
ECOR3	37,980
CPL66	37,494
FIBR3	36,701
LAME4	35,335
SANB11	34,653
ELPL3	34,516
CLSC4	34,034
BRKM5	33,500
CCRO3	32,745
FLRY3	30,586
CIEL3	29,899
LREN3	29,268
MRVE3	29,267
BRFS3	29,250
EMBR3	28,692
BBDC4	28,625
BBDC3	28,391
KLBN11	28,058
SULA11	27,943
LAME3	27,894
WEGE3	26,837
ITUB4	25,899
ITSA4	24,391
ENBR3	24,312
TIET11	23,780
ITUB3	23,408
TIMP3	23,353
CPFE3	20,530
EGIE3	18,709
VIVT4	18,341

THEORETICAL PORTFOLIO FOR November 01, 2017 - OPENING			
TICKER	WEIGHTED % (A)	PERFORMANCE (B)	CONTRIBUTION TO INDEX (A*B)
TIET11	1,061	1,89	0,020
BTOW3	1,027	-19,03	(0,195)
BBDC3	1,058	-7,28	(0,077)
BBDC4	4,121	-5,81	(0,239)
BBA33	1,711	-12,59	(0,215)
BRKM5	4,058	-13,29	(0,539)
BRFS3	10,357	-13,04	(1,351)
CCRO3	5,949	-13,02	(0,775)
CLSC4	0,127	-3,86	(0,005)
CMIG4	2,051	-14,62	(0,300)
CIEL3	7,324	2,32	0,170
CPL66	0,694	-7,68	(0,053)
CPFE3	3,492	-23,67	(0,827)
DTEX3	0,762	-7,64	(0,058)
ECOR3	0,665	0,54	0,004
ELET3	1,635	-15,06	(0,246)
ELET6	1,575	-15,71	(0,247)
ELPL3	0,452	-51,00	(0,231)
EMBR3	3,367	-0,13	(0,004)
EGIE3	2,007	0,44	0,009
FIBR3	3,519	-13,70	(0,482)
FLRY3	2,593	-9,18	(0,238)
ITSA4	1,639	-0,95	(0,016)
ITUB3	0,495	-3,37	(0,017)
ITUB4	5,312	-1,82	(0,097)
KLBN11	2,844	-4,73	(0,135)
LIGT3	0,491	-11,93	(0,059)
LAME3	0,810	-15,37	(0,125)
LAME4	3,447	-15,64	(0,539)
LREN3	7,106	-1,60	(0,113)
MRVE3	1,049	5,53	0,058
NATU3	1,562	-5,84	(0,091)
SANB11	0,443	1,01	0,004
SULA11	1,464	-0,22	(0,003)
VIVT4	6,141	-5,98	(0,367)
TIMP3	2,872	-2,15	(0,062)
WEGE3	3,551	7,52	0,267

OVER PAST 12 MONTHS	
TICKER	BETA IN RELATION TO
ELET3	1,923
CMIG4	1,879
BBA33	1,814
ELET6	1,600
BTOW3	1,539
NATU3	1,460
LAME4	1,437
CPL66	1,403
ECOR3	1,400
CCRO3	1,397
SANB11	1,387
BBDC4	1,347
BBDC3	1,309
LIGT3	1,242
ITUB4	1,232
LREN3	1,222
DTEX3	1,217
ITSA4	1,157
BRFS3	1,044
LAME3	1,037
ITUB3	1,031
ELPL3	0,974
WEGE3	0,973
MRVE3	0,949
ENBR3	0,857
CIEL3	0,807
TIMP3	0,796
VIVT4	0,717
EGIE3	0,670
TIET11	0,649
BRKM5	0,648
FLRY3	0,640
CLSC4	0,624
KLBN11	0,615
SULA11	0,495
EMBR3	0,368
CPFE3	0,206
FIBR3	0,038

PORTFOLIO INFORMATION - November 30, 2017	
% OF HEAVIEST WEIGHTED	9,67
% OF LIGHTEST WEIGHTED	0,13
% OF 5 LARGEST	36,68
% OF 10 LARGEST	57,51

AVERAGE PERFORMANCE	FOR THE MONTH
Food	-13,04
Construction and engineering	5,53
Trading	-12,91
Electricity	-13,21
Financial intermediaries	-4,40
Wood and paper	-8,69
Machinery and equipment	7,52
Transport equipment	-0,13
Insurance	-0,22
Personal hygiene and cleaning produ	-5,84
Chemicals	-13,29
Pharmaceutical/Medical Products	-9,18
Diversified Financial Services	2,32
Wireless Communications	-5,98
Mobile Communications	-2,15
Transportation	-6,24