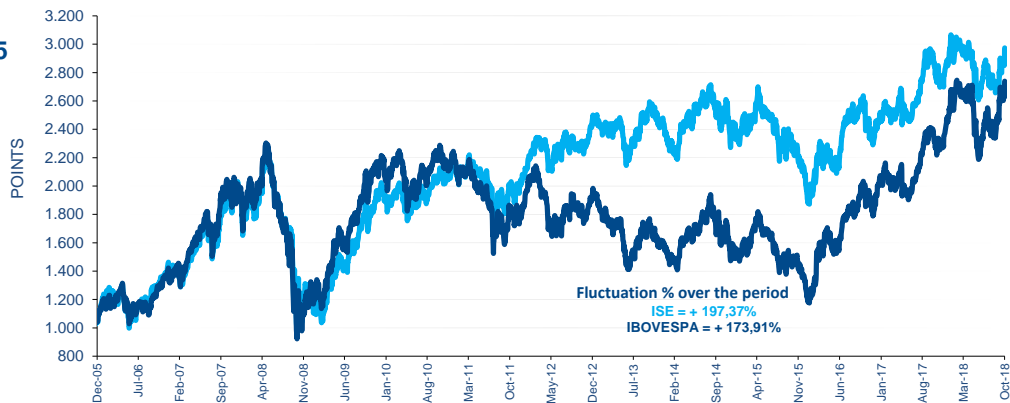
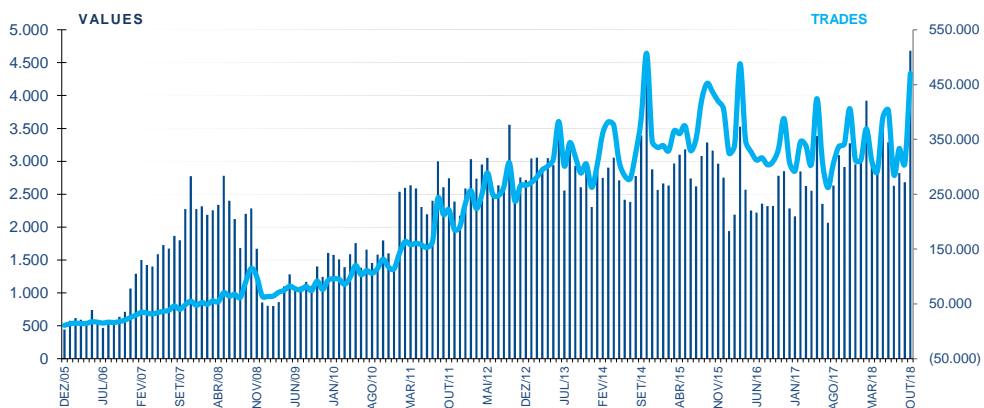


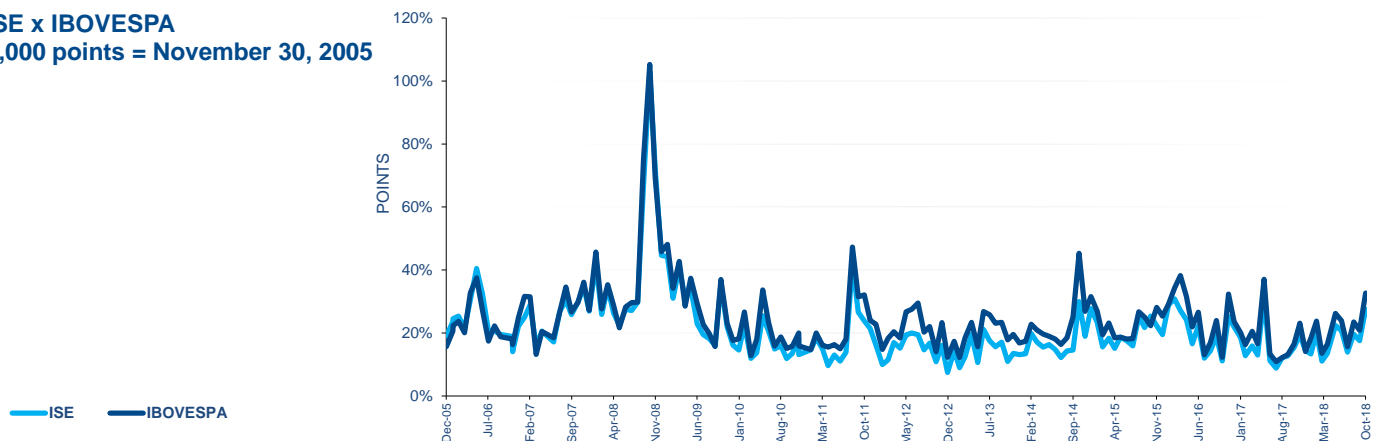
**ISE x IBOVESPA**  
1,000 points = November 30, 2005



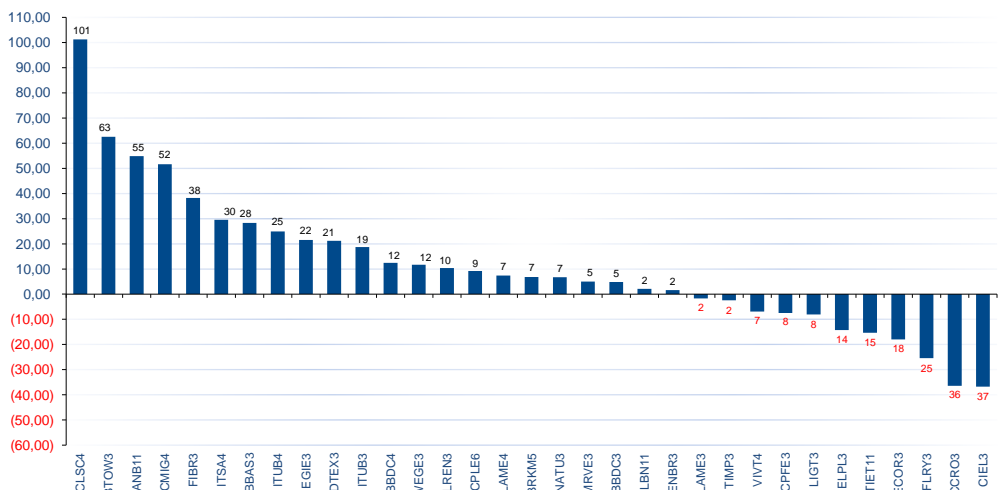
**AVERAGE DAILY VALUES (R\$ MILLION) AND NUMBER OF TRADES**



**ISE x IBOVESPA**  
1,000 points = November 30, 2005



**SHARE PERFORMANCE PAST 12 MONTHS (Nov/2017 to Oct/2018)**



THEORETICAL PORTFOLIO OF October 31, 2018					PERFORMANCE	
TICKER	NAME	TYPE	WEIGHTED %	MONTH Oct/2018	YEAR 2018	
TIET11	AES TIETE E	UNT N2	1,237	8,42	-14,82	
BTOW3	B2W DIGITAL	ON NM	2,184	24,55	68,29	
BBDC3	BRADESCO	ON N1	1,029	17,54	4,94	
BBDC4	BRADESCO	PN N1	4,407	19,71	12,70	
BBAS3	BRASIL	ON NM	2,254	45,16	37,79	
BRKM5	BRASKEM	PNA N1	5,242	-10,76	26,89	
CCRO3	CCR SA	ON ED NM	4,891	34,58	-28,34	
CLSC4	CELESC	PN N2	0,365	27,84	50,16	
CMIG4	CEMIG	PN N1	4,432	54,05	70,64	
CIEL3	CIELO	ON NM	5,738	7,76	-40,10	
CPLE6	COPEL	PNB N1	1,078	22,51	9,35	
CPFE3	CPFL ENERGIA	ON NM	0,539	5,36	31,45	
DTEX3	DURATEX	ON NM	1,227	27,24	24,89	
ECOR3	ECORODOVIAS	ON NM	0,755	31,98	-20,18	
ELPL3	ELETROPOLAU	ON NM	0,091	4,44	71,25	
ENBR3	ENERGIAS BR	ON NM	1,690	9,46	3,75	
EGIE3	ENGIE BRASIL	ON NM	3,271	12,18	20,77	
FIBR3	FIBRIA	ON NM	6,571	-4,86	51,17	
FLRY3	FLEURY	ON NM	2,663	-2,11	-27,27	
ITSA4	ITAUSA	PN N1	1,979	11,29	23,64	
ITUB3	ITAUNIBANCO	ON N1	0,434	12,49	20,53	
ITUB4	ITAUNIBANCO	PN N1	6,130	11,64	22,88	
KLBN11	KLABIN S/A	UNT N2	4,424	-6,13	8,72	
LIGT3	LIGHT S/A	ON NM	0,672	30,54	0,71	
LAME3	LOJAS AMERIC	ON N1	0,978	17,15	7,17	
LAME4	LOJAS AMERIC	PN N1	4,655	18,46	10,70	
LREN3	LOJAS RENNER	ON NM	10,035	21,29	7,04	
MRVE3	MRV	ON NM	1,524	2,85	-11,67	
NATU3	NATURA	ON NM	2,254	14,83	-0,47	
SANB11	SANTANDER BR	UNT	0,650	18,58	38,99	
VIVT4	TELEF BRASIL	PN	7,261	10,26	-4,78	
TIMP3	TIM PART S/A	ON NM	3,839	-1,19	-10,20	
WEGE3	WEG	ON NM	5,501	-8,86	-1,61	

MARKET CAPITALIZATION - October 31, 2018		
COMPANY	IN BRL	IN USD
ITAUNIBANCO	299.226.529.350,84	80.487.002.542,12
BRADESCO	216.883.419.305,35	58.338.063.669,83
SANTANDER BR	158.580.044.382,98	42.655.417.161,95
BRASIL	122.496.577.605,00	32.949.559.567,74
ITAUSA	96.078.301.999,48	25.843.479.032,60
TELEF BRASIL	70.672.029.776,32	19.009.610.720,70
BRASKEM	41.053.452.686,80	11.042.701.855,12
FIBRIA	39.800.204.315,10	10.705.598.707,56
WEG	37.775.861.982,00	10.161.083.998,71
CIELO	35.861.958.805,20	9.646.275.601,90
TIM PART S/A	28.059.766.431,61	7.547.614.501,33
LOJAS AMERIC	27.500.565.099,20	7.397.198.563,41
LOJAS RENNER	26.995.519.193,60	7.261.349.542,35
ENGIE BRASIL	25.979.139.241,60	6.987.960.094,04
CPFL ENERGIA	25.600.555.861,90	6.886.127.407,24
KLABIN S/A	22.720.342.992,10	6.111.397.636,20
CCR SA	22.159.400.000,00	5.960.513.220,54
CEMIG	16.114.421.899,68	4.334.513.785,32
B2W DIGITAL	15.775.603.170,00	4.243.377.133,71
NATURA	14.054.087.613,76	3.780.317.834,62
ENERGIAS BR	8.495.905.516,00	2.285.258.497,46
DURATEX	7.948.603.916,49	2.138.043.391,48
COPEL	7.146.494.291,21	1.922.289.128,01
FLEURY	6.581.402.496,60	1.770.288.752,88
ELETROPOLAU	5.614.421.428,00	1.510.186.789,68
MRV	5.613.925.605,76	1.510.053.421,67
ECORODOVIAS	5.279.706.306,00	1.420.153.940,88
AES TIETE E	4.040.890.815,44	1.086.933.000,37
LIGHT S/A	3.399.580.780,20	914.431.175,24
CELESC	1.511.809.366,00	406.651.791,70
<b>TOTAL = 30</b>	<b>1.399.020.522.234,22</b>	<b>376.313.452.466,36</b>

VARIACAO %	NO MES	NO ANO	12 MESES	ACUM.
ISE	10,37	5,10	3,53	197,37
IBOVESPA	10,19	14,43	17,65	173,91
IGC	10,77	10,13	12,87	271,30
IBRX 50	9,71	14,53	17,73	217,41

OVER THE PAST 12 MONTHS

TICKER	VOLATILITY
BTOW3	56,660
ELPL3	55,335
LIGT3	48,420
CMIG4	44,490
BBAS3	43,568
DTEX3	41,955
ECOR3	41,055
CCRO3	37,898
BRKM5	37,586
NATU3	37,215
CIEL3	37,137
LAME4	36,545
BBDC3	35,641
SANB11	35,212
LREN3	34,739
MRVE3	34,364
ENBR3	34,261
LAME3	33,931
FLRY3	33,466
CPLE6	33,387
ITSA4	33,132
BBDC4	32,789
CLSC4	31,948
TIMP3	31,858
ITUB4	30,889
WEGE3	29,495
FIBR3	26,882
VIVT4	26,741
ITUB3	26,467
TIET11	24,231
KLBN11	22,000
CPFE3	20,060
EGIE3	19,596

THEORETICAL PORTFOLIO FOR October 01, 2018 - OPENING

TICKER	WEIGHTED % (A)	PERFORMANCE (B) %	CONTRIBUTION TO INDEX (A*B)
TIET11	1,260	8,42	0,106
BTOW3	1,879	24,55	0,461
BBDC3	0,955	17,54	0,168
BBDC4	3,987	19,71	0,786
BBAS3	1,689	45,16	0,763
BRKM5	6,882	-10,76	(0,741)
CCRO3	4,202	34,58	1,453
CLSC4	0,318	27,84	0,089
CMIG4	3,091	54,05	1,671
CIEL3	6,104	7,76	0,473
CPLE6	0,963	22,51	0,217
CPFE3	0,567	5,36	0,030
DTEX3	1,098	27,24	0,299
ECOR3	0,622	31,98	0,199
ELPL3	0,097	4,44	0,004
ENBR3	1,682	9,46	0,159
EGIE3	3,220	12,18	0,392
FIBR3	7,701	-4,86	(0,374)
FLRY3	2,934	-2,11	(0,062)
ITSA4	1,939	11,29	0,219
ITUB3	0,419	12,49	0,052
ITUB4	5,992	11,64	0,697
KLBN11	5,233	-6,13	(0,321)
LIGT3	0,555	30,54	0,169
LAME3	0,940	17,15	0,161
LAME4	4,422	18,46	0,816
LREN3	8,929	21,29	1,901
MRVE3	1,598	2,85	0,046
NATU3	2,178	14,83	0,323
SANB11	0,572	18,58	0,106
VIVT4	7,244	10,26	0,743
TIMP3	4,218	-1,19	(0,050)
WEGE3	6,510	-8,86	(0,577)

OVER PAST 12 MONTHS

TICKER	BETA IN RELATION TO IBOVESPA
BTOW3	1,901
BBAS3	1,786
CLSC4	1,784
CMIG4	1,579
BBDC3	1,549
LAME4	1,510
BBDC4	1,486
ITSA4	1,466
SANB11	1,456
LREN3	1,424
ITUB4	1,393
ECOR3	1,321
DTEX3	1,313
LAME3	1,300
LIGT3	1,203
CPLE6	1,188
MRVE3	1,169
CCRO3	1,128
ITUB3	1,124
TIMP3	1,073
FLRY3	1,069
NATU3	1,027
VIVT4	0,905
ENBR3	0,895
CIEL3	0,885
WEGE3	0,842
BRKM5	0,683
EGIE3	0,607
TIET11	0,534
ELPL3	0,469
CPFE3	0,363
KLBN11	0,280
FIBR3	(0,168)

PORTFOLIO INFORMATION - October 31, 2018

% OF HEAVIEST WEIGHTED	10,04
% OF LIGHTEST WEIGHTED	0,09
% OF 5 LARGEST	35,74
% OF 10 LARGEST	60,46

AVERAGE PERFORMANCE % PER SECTOR FOR THE MONTH

Construction	2,85
Trading	20,36
Electricity	19,42
Financial intermediaries	19,49
Wood and paper	5,42
Machinery and equipment	-8,86
Personal hygiene and cleaning produc	14,83
Chemicals	-10,76
Pharmaceutical/Medical Products	-2,11
Diversified Financial Services	7,76
Telecommunications	4,53
Transportation	33,28