



# RETIRESS X-RAY

DATAWISE Insights

**TABLE OF CONTENTS**

**1 PRODUCT DESCRIPTION WITHIN DATAWISE SERVICE.....3**

**2 DASHBOARD DESCRIPTION .....4**

**3 HISTORIC SERIES PANEL – VALUES.....4**

**4 HISTORIC SERIES PANEL – QUANTITY.....5**

**5 RETIREMENT RANKING BY REGION .....6**

**6 FILTERS .....6**

**6.1 Date .....6**

**6.2 Brazilian State (UF) .....7**

**6.3 Mesoregion.....7**

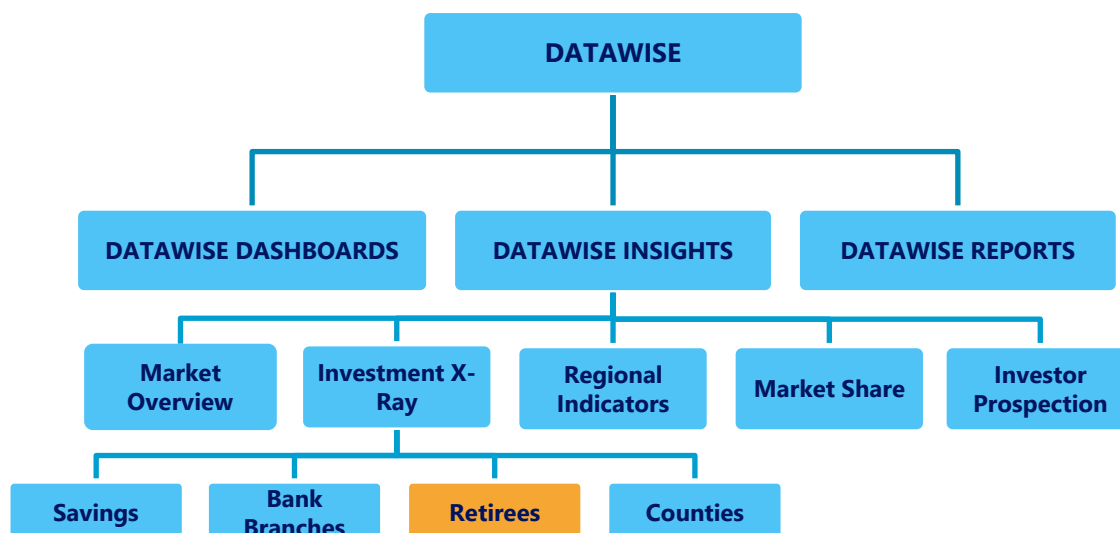
**6.4 Microregion .....7**

**6.5 Municipality.....7**

**6.6 Category.....8**

**7 SERVICE TEAMS.....8**

## 1 PRODUCT DESCRIPTION WITHIN DATAWISE SERVICE



The DATAWISE product was created by B3 with the aim of helping its clients in strategic decisions consolidating various reliable and/or sensitive data in the form of interactive dashboards (DATAWISE Dashboard and DATAWISE Insights) and reports (DATAWISE Reports). It should be noted that as stated in the Commercial Policy, the DATAWISE service does not allow the distribution or redistribution of data.

Each of these modules can be contracted separately as well as their products (individual dashboards and reports), according to the client's intention. Through the interactive panels it's possible analyze the behavior of stocks (BOVESPA), derivatives and stock futures (BMF) and rental of stocks (BTB) with DATAWISE Dashboards or analyze individual investors' behavior with DATAWISE Insights. Already in DATAWISE Reports you can analyze trading and post-trade asset data, mainly from the OTC market thought reports with raw data (Data Report) or worked reports (Market Report).

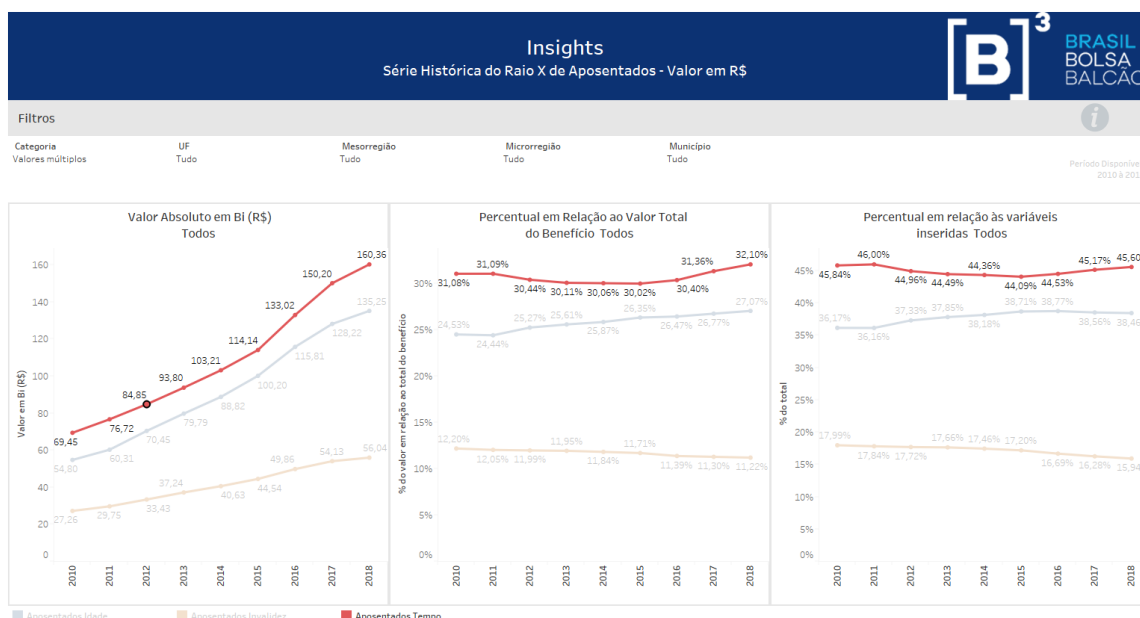
In this manual we will show the Investor Prospection dashboard layout, data and filters contained in the DATAWISE Insights module.

## 2 DASHBOARD DESCRIPTION

The product X-ray of retirees from DATAWISE Insights shows more detailed information on the subject of retirees in the Brazilian territory, bringing information about the amount and/or amount spent on benefits in Brazilian regions up to the municipality level, as well as verifying the ranking of Brazilian regions in relation to this theme in order to provide a detailed panorama for the analysis through the compilation of public data made available by the IBGE (PNAD report) and Social Security and data worked by B3.

The Retirement X-Ray product is divided into Value History Series, Quantity History Series, and Retirees Ranking panels by region.

## 3 HISTORIC SERIES PANEL – VALUES



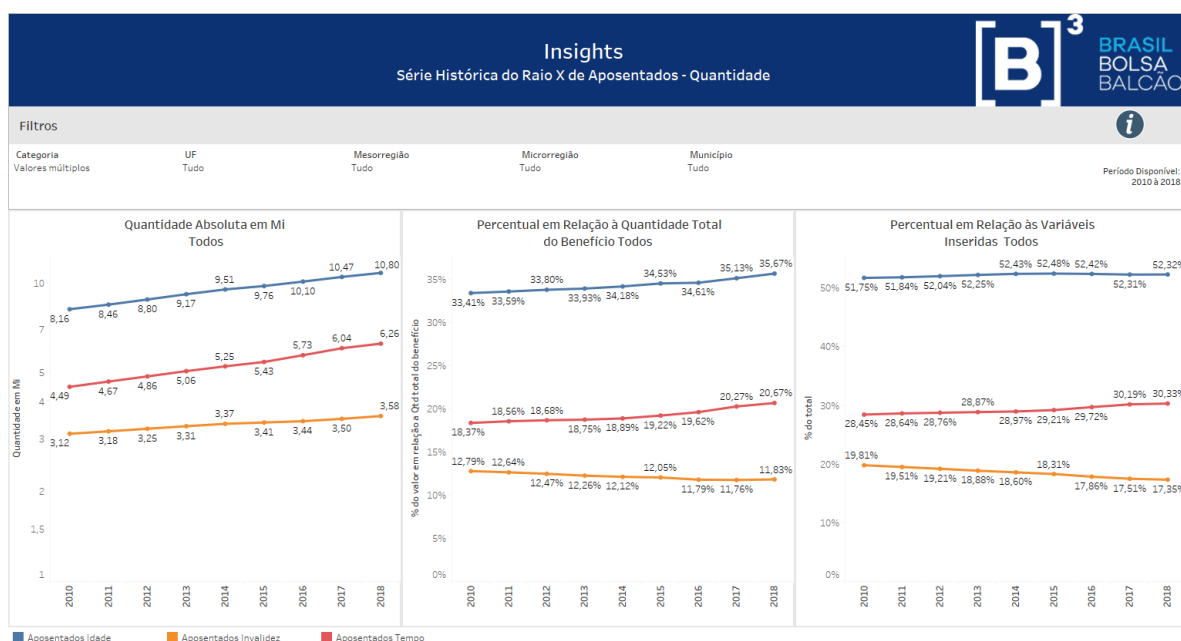
Fonte: IBGE (relatório PNAD) e Previdência Social

It is possible to analyze the historical series of the absolute value (billions of reais), the percentage in relation to the total benefit of all categories of retirees

(%) and the percentage in relation to the variables entered for all categories of retirees (%) of the retired people.

The categories that can be filtered in the panel into Retired by age, Retired by disability, Retired by time, Allowance, Death pension, Total pension beneficiaries and Other pension beneficiaries.

#### 4 HISTORIC SERIES PANEL – QUANTITY

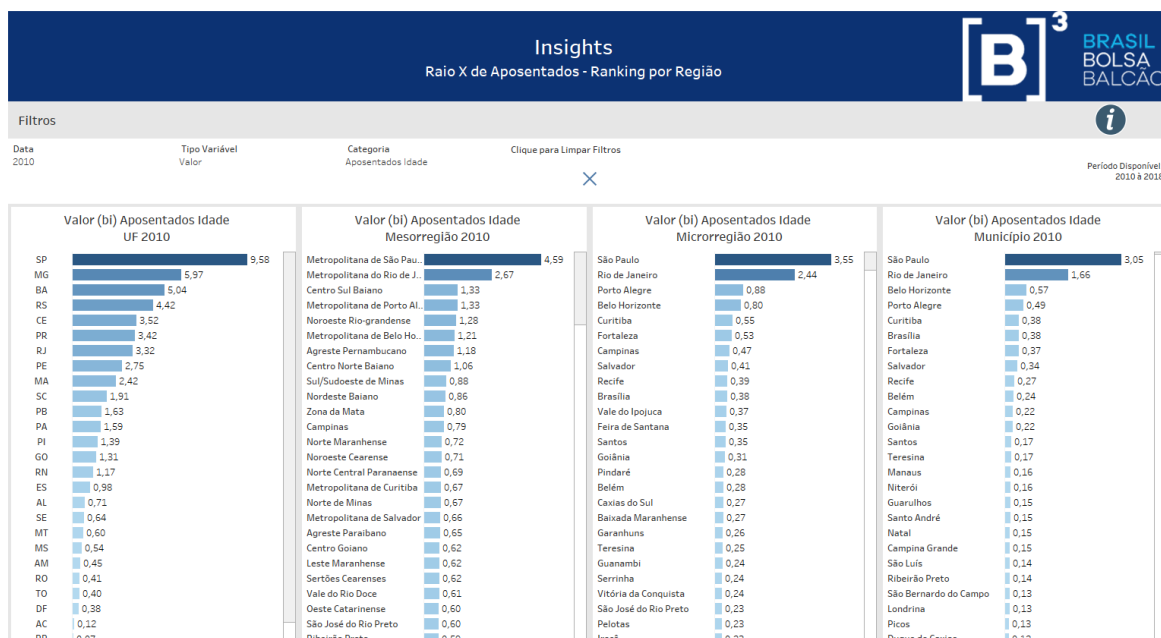


Fonte: IBGE (relatório PNAD) e Previdência Social

It is possible to analyze the historical series of the absolute value (millions of beneficiaries), the percentage in relation to the total benefit of all categories (%) and the percentage in relation to the variables entered for all categories of retirees (%) of retirees.

The categories that can be filtered in the panel into Retired by age, Retired by disability, Retired by time, Allowance, Death pension, Total pension beneficiaries and Other pension beneficiaries.

## 5 RETIREMENT RANKING BY REGION



Fonte: IBGE (relatório PNAD) e Previdência Social

It is possible to analyze on the same screen the behavior of the value (billions of reais) or the number of retirees in the Brazilian regions separated into federative unit, mesoregion, microregion and municipality.

## 6 FILTERS

### 6.1 Date

Data 

julho de 2017 

You can filter data from January 2007 to M-3.



## 6.2 Brazilian State (UF)


UF  

(Tudo) 

This filter enables you to select geographic regions at state level such as SP, RJ, BA, GO, MT, etc.

## 6.3 Mesoregion


Mesoregião  

(Tudo) 

You can also select data by Brazilian mesoregion such as Agreste Alagoano, Agreste Paraibano, Agreste Pernambucano, Baixo Amazonas, Centro-Sul Paranaense, etc.

## 6.4 Microregion

Microrregião

(Tudo) 

You can also select data by Brazilian microregion such as Piracicaba, Alto do Pantanal, Alto Solimões, Amparo, Bom Despacho. Borborema Potiguar, etc.

## 6.5 Municipality

Município

(Tudo) 

You can select municipality data such as Saltinho, Acauã, Piracicaba. Abaeté, Água Doce, Nazaré, Natal, etc.

## 6.6 Category

Categoria

Aposentados Idade

The categories that can be filtered in the panel into Retired by age, Retired by disability, Retired by time, Allowance, Death pension, Total pension beneficiaries and Other pension beneficiaries.

## 7 SERVICE TEAMS

Take a major step and optimize your decision making. Explore our products. If you have any query, talk to our team.

***Any query? Talk to us***

DATAWISE Sale: [produtosdedados@b3.com.br](mailto:produtosdedados@b3.com.br)

Contracting: [contratacao@b3.com.br](mailto:contratacao@b3.com.br)

Technical Support: [dataservices@b3.com.br](mailto:dataservices@b3.com.br)