



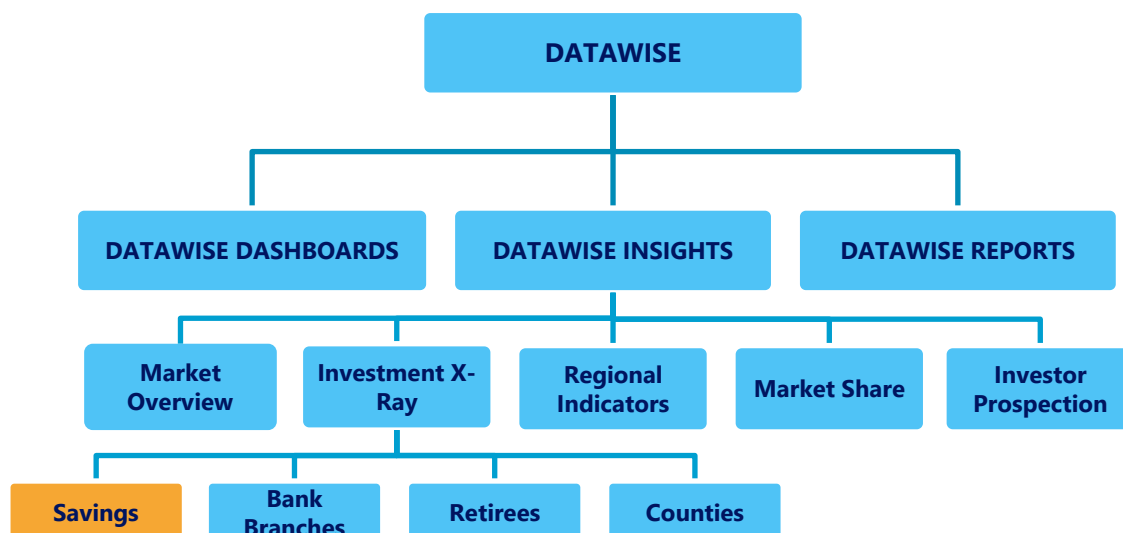
# SAVINGS X-RAY

DATAWISE Insights

## SUMÁRIO

<b>1</b>	<b>PRODUCT DESCRIPTION WITHIN DATAWISE SERVICE.....</b>	<b>3</b>
<b>2</b>	<b>DASHBOARD DESCRIPTION .....</b>	<b>4</b>
<b>3</b>	<b>SAVINGS X-RAY PANEL.....</b>	<b>4</b>
<b>4</b>	<b>HISTORIC SERIES PANEL .....</b>	<b>5</b>
<b>5</b>	<b>SAVINGS BY RANGE PANEL.....</b>	<b>6</b>
<b>6</b>	<b>RANKING OF SAVINGS BY REGION PANEL.....</b>	<b>7</b>
<b>7</b>	<b>FILTERS .....</b>	<b>8</b>
<b>7.1</b>	<b>Date.....</b>	<b>8</b>
<b>7.2</b>	<b>Brazilian State (UF).....</b>	<b>8</b>
<b>7.3</b>	<b>Mesoregion.....</b>	<b>8</b>
<b>7.4</b>	<b>Microregion .....</b>	<b>8</b>
<b>7.5</b>	<b>Municipality.....</b>	<b>9</b>
<b>7.6</b>	<b>Type of Savings .....</b>	<b>9</b>
<b>8</b>	<b>METRICS.....</b>	<b>9</b>
<b>8.1</b>	<b>Long-Term Savings Account Balance.....</b>	<b>9</b>
<b>8.2</b>	<b>Short-Term Savings Account Balance.....</b>	<b>9</b>
<b>9</b>	<b>SERVICE TEAMS.....</b>	<b>9</b>

## 1 PRODUCT DESCRIPTION WITHIN DATAWISE SERVICE



The DATAWISE product was created by B3 with the aim of helping its clients in strategic decisions consolidating various reliable and/or sensitive data in the form of interactive dashboards (DATAWISE Dashboard and DATAWISE Insights) and reports (DATAWISE Reports). It should be noted that as stated in the Commercial Policy, the DATAWISE service does not allow the distribution or redistribution of data.

Each of these modules can be contracted separately as well as their products (individual dashboards and reports), according to the client's intention. Through the interactive panels it's possible analyze the behavior of stocks (BOVESPA), derivatives and stock futures (BMF) and rental of stocks (BTB) with DATAWISE Dashboards or analyze individual investors' behavior with DATAWISE Insights. Already in DATAWISE Reports you can analyze trading and post-trade asset data, mainly from the OTC market thought reports with raw data (Data Report) or worked reports (Market Report).

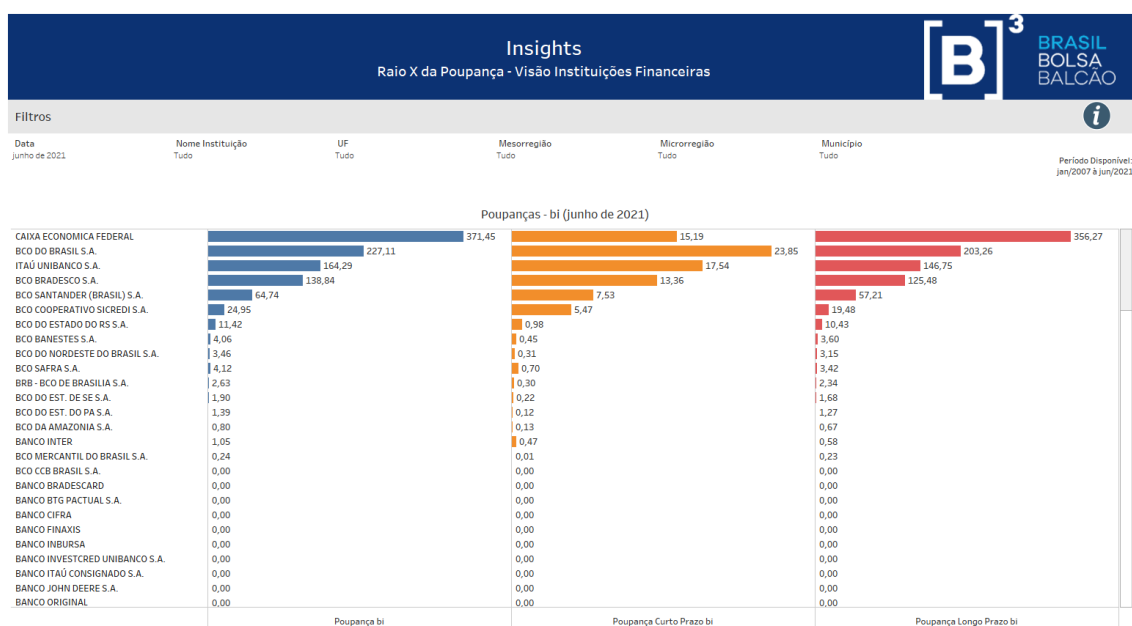
In this manual we will show the Savings X-Ray dashboard layout, data and filters contained in the DATAWISE Insights module.

## 2 DASHBOARD DESCRIPTION

DATAWISE Insights Savings X-Ray Product Shows More Information detailed information on the subject of savings accounts bringing information to respect of institutions, regions, types of savings (short savings or term), among other information in order to provide a detailed overview for customer analysis through the compilation of data provided by the Central Bank and prepared by B3.

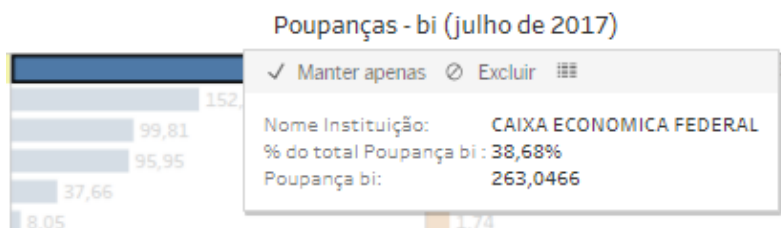
The savings X-ray product is divided into the Savings X-ray panels, Historical Series, Savings by Value Range and Ranking Savings by region.

## 3 SAVINGS X-RAY PANEL

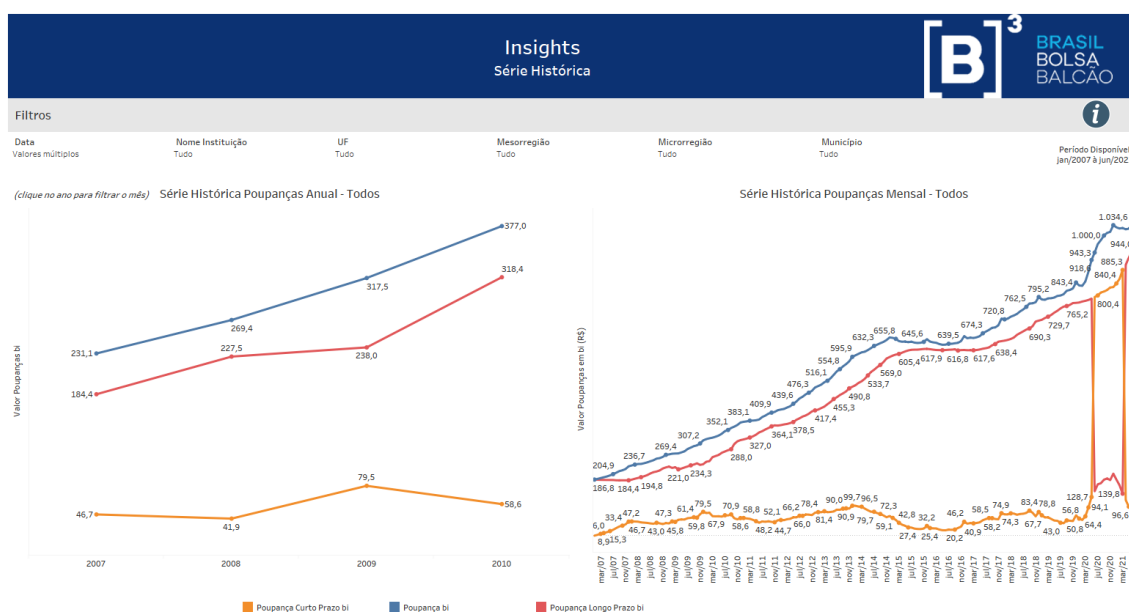


Fonte: Banco Central + Elaboração B3 (Poupança de Curto e Longo Prazo)

In this panel, it is possible to analyze the amount in billions in general savings (blue), short-term savings (orange) and long-term savings (pink), in addition to the information available on the screen in the image above, it is possible to mouse over up or click to view its percentage as in the image below:



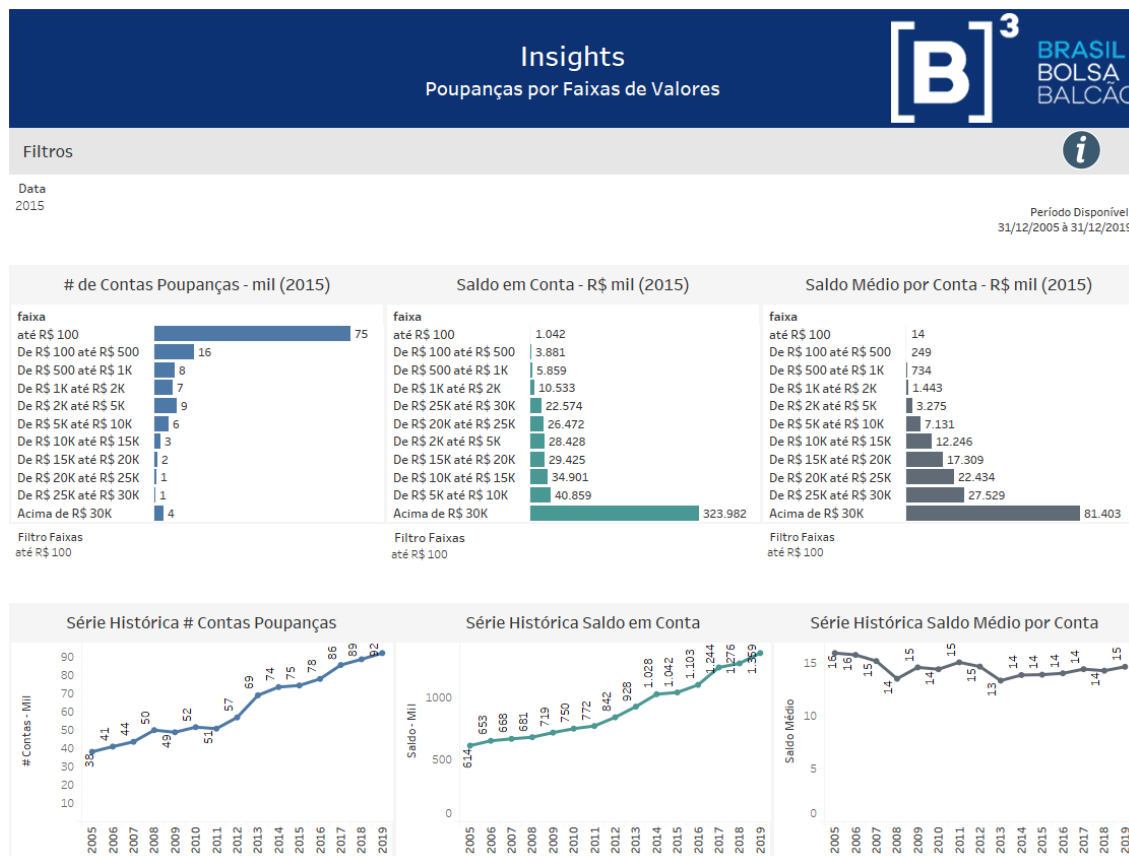
## 4 HISTORIC SERIES PANEL



Fonte: Banco Central + Elaboração B3 (Poupança de Curto e Longo Prazo)

It is possible to visualize the historical series of general savings (blue), short-term savings (orange) and long-term savings (pink) related to the chosen filters.

## 5 SAVINGS BY RANGE PANEL



Fonte: Banco Central + Elaboração B3 (Poupança de Curto e Longo Prazo)

It is possible to have an overview between the quantities and historical series of savings accounts, account balances and the average balance per account, being able to interact with the screen filters and value ranges as seen below:

Filtro Faixas

até R\$ 100

☐ (Tudo)

☒ até R\$ 100

☐ De R\$ 100 até R\$ 500

☐ De R\$ 500 até R\$ 1K

☐ De R\$ 1K até R\$ 2K

☐ De R\$ 2K até R\$ 5K

☐ De R\$ 5K até R\$ 10K

☐ De R\$ 10K até R\$ 15K

☐ De R\$ 15K até R\$ 20K

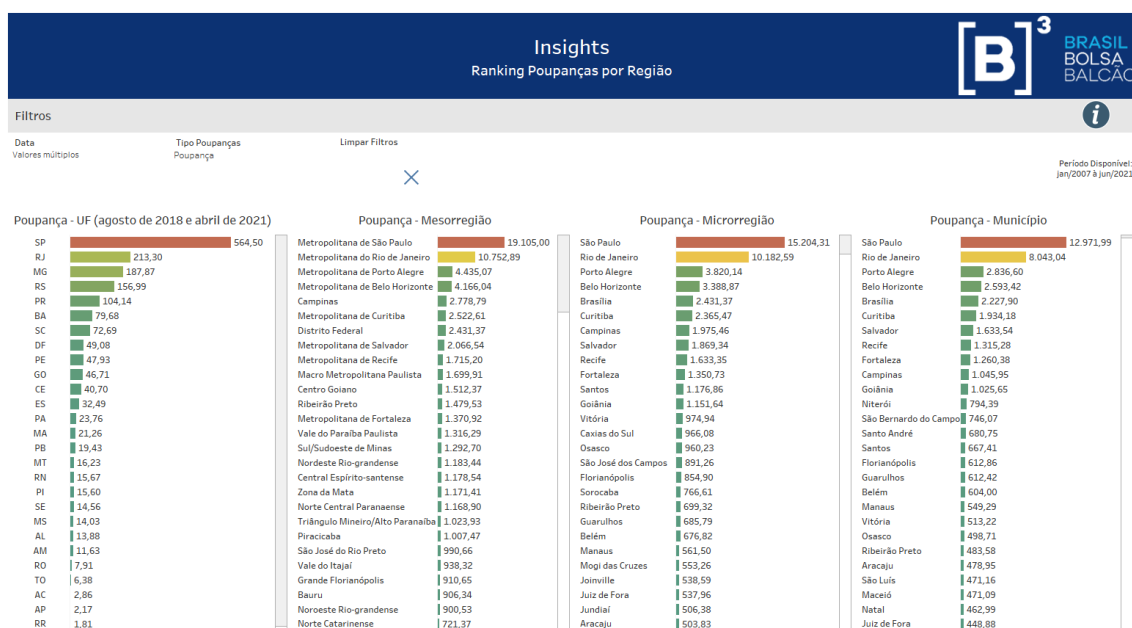
☐ De R\$ 20K até R\$ 25K

☐ De R\$ 25K até R\$ 30K

☐ Acima de R\$ 30K

Cancelar Aplicar

## 6 RANKING OF SAVINGS BY REGION PANEL



Fonte: Banco Central + Elaboração B3 (Poupança de Curto e Longo Prazo)

You can have an overview in relation to the chosen savings category and visualize the ranking of Federative Units and the behavior of the regions separated into mesoregion, microregion and municipality.

## 7 FILTERS

### 7.1 Date

A screenshot of a web interface showing a filter for 'Data' (Date). The dropdown menu is open, displaying 'julho de 2017' as the selected option. There is a small 'x' icon in the top right corner of the dropdown.

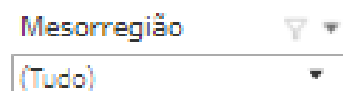
You can filter data from January 2007 to M-3.

### 7.2 Brazilian State (UF)

A screenshot of a web interface showing a filter for 'UF' (Brazilian State). The dropdown menu is open, displaying '(Tudo)' (All) as the selected option. There is a small 'x' icon in the top right corner of the dropdown.

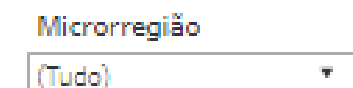
This filter enables you to select geographic regions at state level such as SP, RJ, BA, GO, MT, etc.

### 7.3 Mesoregion

A screenshot of a web interface showing a filter for 'Mesorregião' (Mesoregion). The dropdown menu is open, displaying '(Tudo)' (All) as the selected option. There is a small 'x' icon in the top right corner of the dropdown.

You can also select data by Brazilian mesoregion such as Agreste Alagoano, Agreste Paraibano, Agreste Pernambucano, Baixo Amazonas, Centro-Sul Paranaense, etc.

### 7.4 Microregion

A screenshot of a web interface showing a filter for 'Microrregião' (Microregion). The dropdown menu is open, displaying '(Tudo)' (All) as the selected option. There is a small 'x' icon in the top right corner of the dropdown.



You can also select data by Brazilian microregion such as Piracicaba, Alto do Pantanal, Alto Solimões, Amparo, Bom Despacho. Borborema Potiguar, etc.

### 7.5 Municipality

Município

You can select municipality data such as Saltinho, Acauã, Piracicaba. Abaeté, Água Doce, Nazaré, Natal, etc.

### 7.6 Type of Savings

Tipo Poupanças

In type of savings it is able to filter the information into general savings, short-term savings and long-term savings.

## 8 METRICS

### 8.1 Long-Term Savings Account Balance

Represents the lowest observed value of the total balance of the savings account on a 12-month rolling monthly window.

### 8.2 Short-Term Savings Account Balance

It represents the difference between the total balance of the savings account and the observed value of the Long-Term account.

## 9 SERVICE TEAMS

Take a major step and optimize your decision making. Explore our products. If you have any query, talk to our team.

***Any query? Talk to us***

DATAWISE Sale: [produtosdedados@b3.com.br](mailto:produtosdedados@b3.com.br)

Contracting: [contratacao@b3.com.br](mailto:contratacao@b3.com.br)

Technical Support: [dataservices@b3.com.br](mailto:dataservices@b3.com.br)