



ALLOCATION RANKING

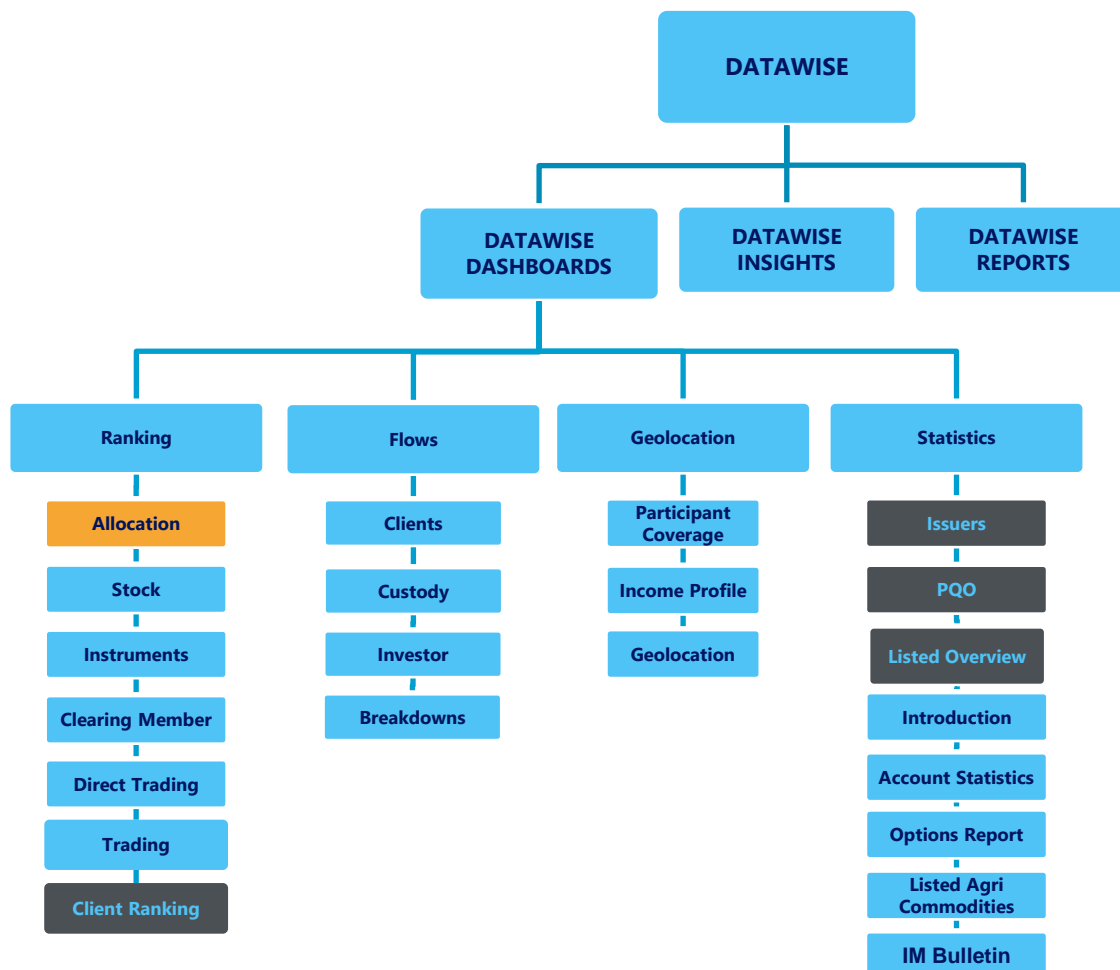
DATAWISE Dashboards

TABLE OF CONTENTS

1	PRODUCT DESCRIPTION WITHIN THE DATAWISE SERVICE.....	4
2	ALLOCATION RANKING DASHBOARD DESCRIPTION.....	5
2.1	Consolidated Dashboard.....	6
2.2	Comparative Dashboard	6
2.3	Comparative Dashboard Independent Filter	7
2.4	Ranking Time Series Dashboard.....	8
3	FILTERS.....	8
3.1	View.....	8
3.2	Metrics	9
3.3	Period.....	9
3.4	Commodity	9
3.5	Expiration.....	10
3.6	Tickers	10
3.7	Investor Category.....	10
3.8	Instrument	11
3.9	Trade Type.....	11
4	SPECIFIC FILTERS FOR EACH DASHBOARD	12
4.1	Consolidated Dashboard.....	12

4.2 Comparative Dashboard	12
4.3 Time Series Dashboard	13
5 ADDITIONAL FILTERS.....	13
5.1 Groupings	13
5.2 Trading Type.....	14
6 SERVICE TEAMS	15

1 PRODUCT DESCRIPTION WITHIN THE DATAWISE SERVICE



The DATAWISE product was created by B3 with the aim of helping its clients in strategic decisions consolidating various reliable and/or sensitive data in the form of interactive dashboards (DATAWISE Dashboard and DATAWISE Insights) and reports (DATAWISE Reports). It should be noted that as stated in the Commercial Policy, the DATAWISE service does not allow the distribution or redistribution of data.

Each of these modules can be contracted separately as well as their products (individual dashboards and reports), according to the client's intention. Through the interactive panels it's possible analyze the behavior of stocks

(BOVESPA), derivatives and stock futures (BMF) and rental of stocks (BTB) with DATAWISE Dashboards or analyze individual investors' behavior with DATAWISE Insights. Already in DATAWISE Reports you can analyze trading and post-trade asset data, mainly from the OTC market through reports with raw data (Data Report) or worked reports (Market Report).

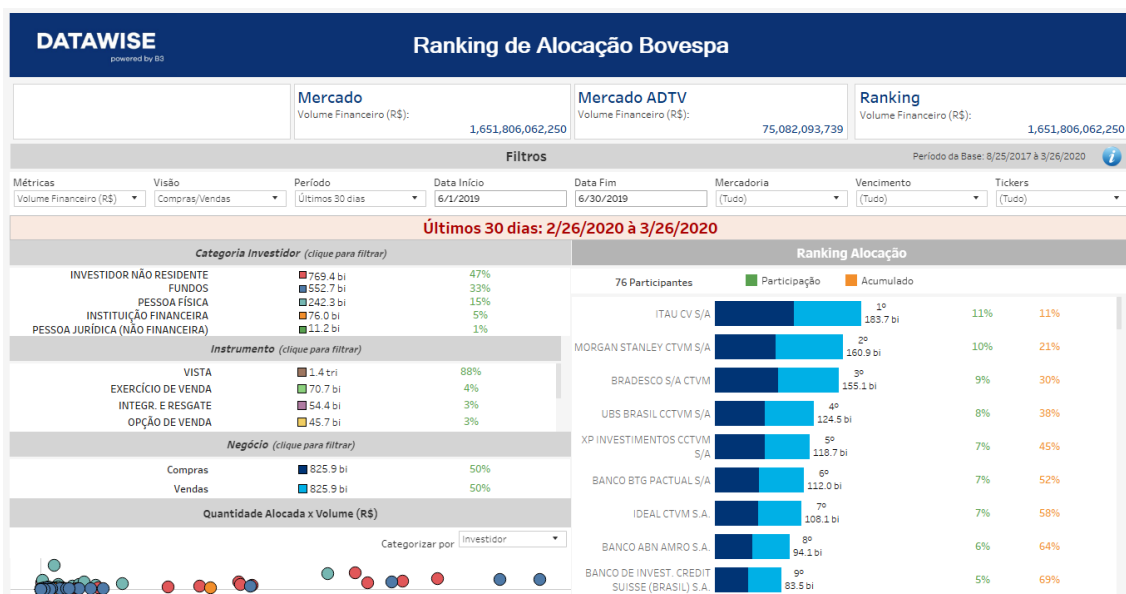
In this manual we will show the Allocation Ranking dashboard layout, data and filters contained in the DATAWISE Dashboard module.

2 ALLOCATION RANKING DASHBOARD DESCRIPTION

The Allocation Ranking shows the entire financial volume and number of stocks allocated from Full Trading Participants (PNPs) to Trading Participants (PNs)* for the Bovespa, BM&F and BTB markets. There are squares in the Allocation Ranking not previously available in the trading ranking (specifically focused on PNPs) precisely due to their business model.

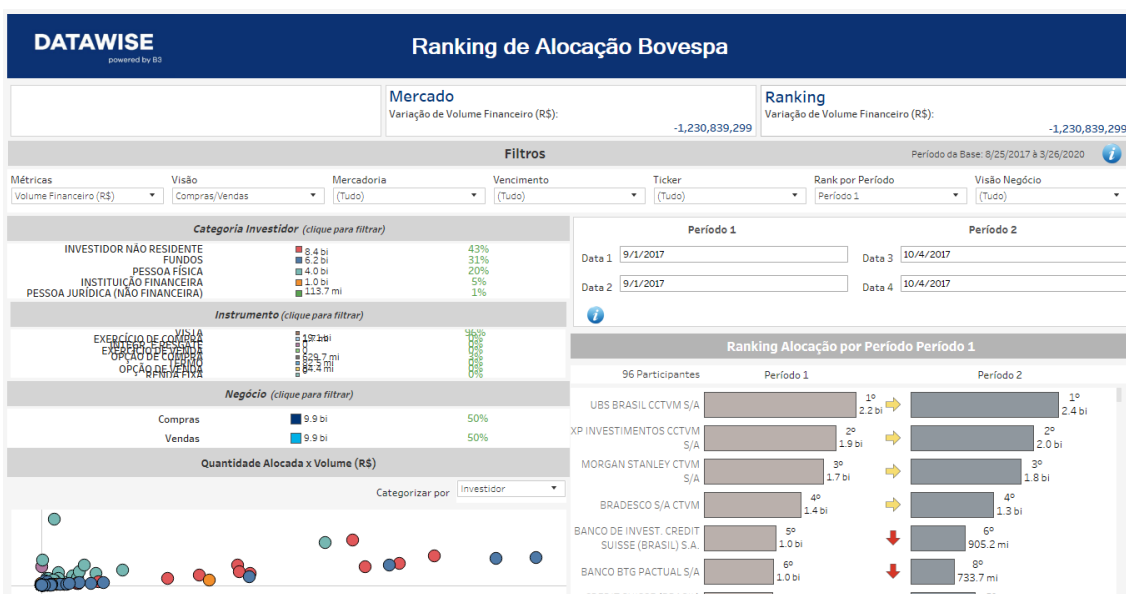
The Allocation Ranking dashboard is divided into 4 panels that allow you to monitor the market share of each brokerage house and their evolution from one period to another or over a time series. Data can be filtered by investor category, instrument, trade and allocated quantity vs. volume.

2.1 Consolidated Dashboard



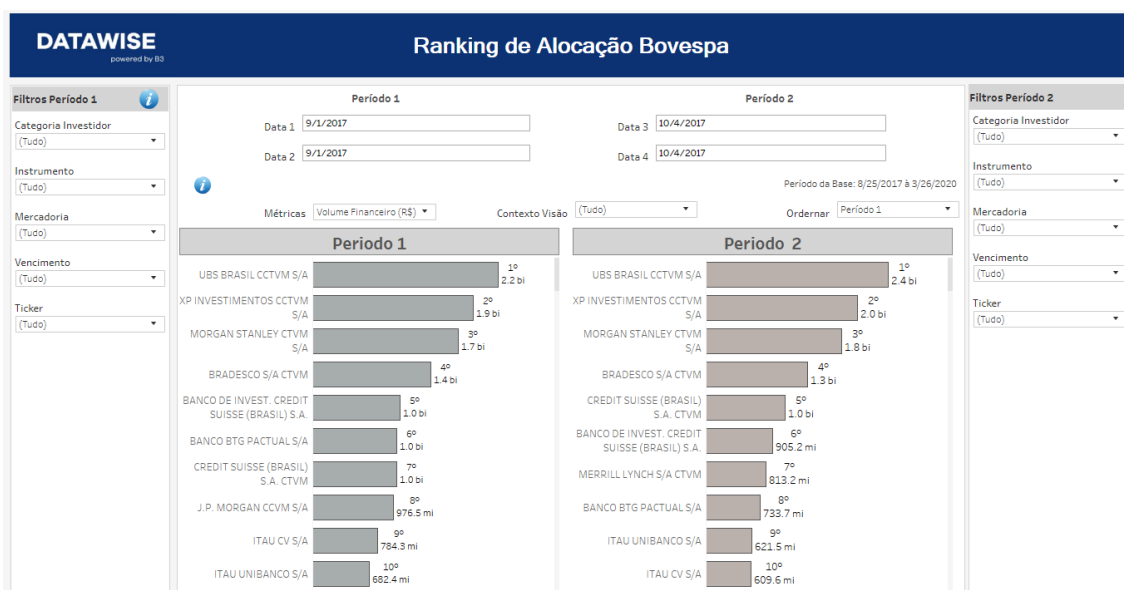
This dashboard provides an overview of allocation rankings by financial amount traded by brokerage houses and brings a granularity at investor type, financial instrument and trade type level.

2.2 Comparative Dashboard



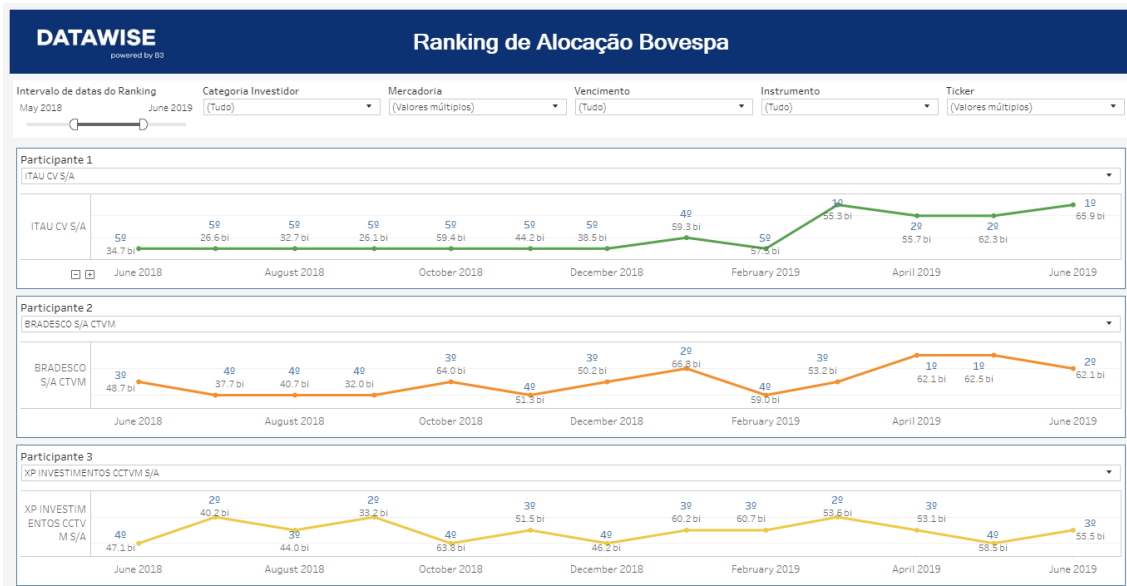
The comparison is done based on participant performance over a two-period analysis showing whether participants have increased, stabilized or decreased their position.

2.3 Comparative Dashboard Independent Filter



The comparison is done with a focus on the collation of data filtered by period showing whether participants have increased, stabilized or decreased their position.

2.4 Ranking Time Series Dashboard



Comparison is done based on up to 3 participants in a timeline showing the position of each participant on the chart and the financial value traded.

3 FILTERS

3.1 View

Visão

Compras/Vendas

Buy/Sell - Divides the financial volume and quantity of stocks allocated between buy and sell.

Visão

Tipo Negociação

Trading Type – Analyzes the trading volume with or without give-up.

3.2 Metrics

Métricas

Volume Financeiro (R\$) ▼

Metrics - Financial Volume (R\$) and Stock Quantity are metrics available for viewing in the dashboard.

For Derivatives and Futures (former BM&F segment), the number of contracts is used for a more assertive analysis.

3.3 Period

Período

Últimos 30 dias ▼

Period – Complete base: Available from August 25, 2017 until the last date, which will be between T-2 or T-3.

When choosing the **date selection** option in the period filter, you can choose between start date and end date.

Data Início

7/1/2019

Data Fim

7/31/2019

When choosing the **last 30 days** option it will display data on the last 30 calendar days.

3.4 Commodity

Mercadoria

(Tudo) ▼

Commodity – Allows users to choose a specific commodity. Usually the commodity is the first 4 letters that make up the instrument, including cash equities, options and forward.

3.5 Expiration

Vencimento
(Tudo) ▼

Expiration – Valid for call and put options and their respective exercises, it allows you to choose specific expiration dates. It should be noted that when choosing 9999-12-31 (default), these instruments will be excluded from the analysis.

3.6 Tickers

Tickers
(Tudo) ▼

Ticker – Allows you to choose the ticker of the instrument to be assessed. All assets traded on the analysis date will be available. Only one ticker is allowed to be chosen at a time or view the entire market when removing the filter.

3.7 Investor Category

Categoria Investidor (clique para filtrar)		
INVESTIDOR NÃO RESI..	711.9 bi	47%
FUNDOS	520.5 bi	34%
PESSOA FÍSICA	216.5 bi	14%
PESSOA JURÍDICA (NÃO..	10.4 bi	1%
INSTITUIÇÃO FINANCEI..	69.9 bi	5%

Investor Category – The different investor types are in the same colors as the other dashboards and have their percentages distributed according to the trading volume and chosen filters. It is possible to select investor categories as a

filter from one click. By clicking and **holding down the Ctrl key**, you can select more than one audience at the same time.

3.8 Instrument

<i>Instrumento (clique para filtrar)</i>		
VISTA	1.3 tri	88%
EXERCÍCIO DE VENDA	70.7 bi	5%
INTEGR. E RESGATE	51.0 bi	3%
OPÇÃO DE VENDA	43.7 bi	3%
TERMO	13.2 bi	1%
OPÇÃO DE COMPRA	10.3 bi	1%
RENDA FIXA	273.4 mi	0%
EXERCÍCIO DE COMPRA	177.5 mi	0%

Instrument – Different types of instruments are available for filtering and can be excluded if a previous filter has been selected (e.g. when selecting the PETR4 ticker, only Cash Instrument will appear). If an instrument filter is chosen before the others, commodities and tickers will be filtered in the same way as in the previous example. As with the Investor Category filter by **clicking and holding down the Ctrl key**, it is possible to select more than one instrument simultaneously.

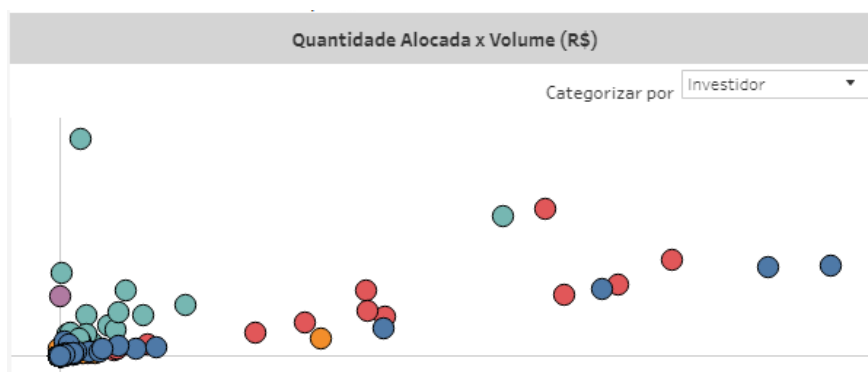
3.9 Trade Type

<i>Tipo Negócio (clique para filtrar)</i>		
Compras	764.7 bi	50%
Vendas	764.7 bi	50%

Trade Type – Divided between buy and sell or with give-up and without give-up, you can view participants who have a higher trading level for each trade type for certain filtered scenarios.

4 SPECIFIC FILTERS FOR EACH DASHBOARD

4.1 Consolidated Dashboard



Allocated Quantity vs. Volume (R\$) – By using the click-and-drag function, you can select different participants for analysis forming a new ranking list.

4.2 Comparative Dashboard

Período 1		Período 2	
Data 1	<input type="text" value="5/1/2018"/>	Data 3	<input type="text" value="1/5/2019"/>
Data 2	<input type="text" value="5/31/2018"/>	Data 4	<input type="text" value="11/30/2019"/>

Period 1 and 2 – When comparing by period, you can choose two period intervals within the available base (August 17 to T-2). By making this choice, you can compare week on week (WoW), month on month (MoM) or year on year (YoY).

Ordenar por

Order by - You can also sort order between period 1 and 2 and view which institutions rose or fell from one period to another.

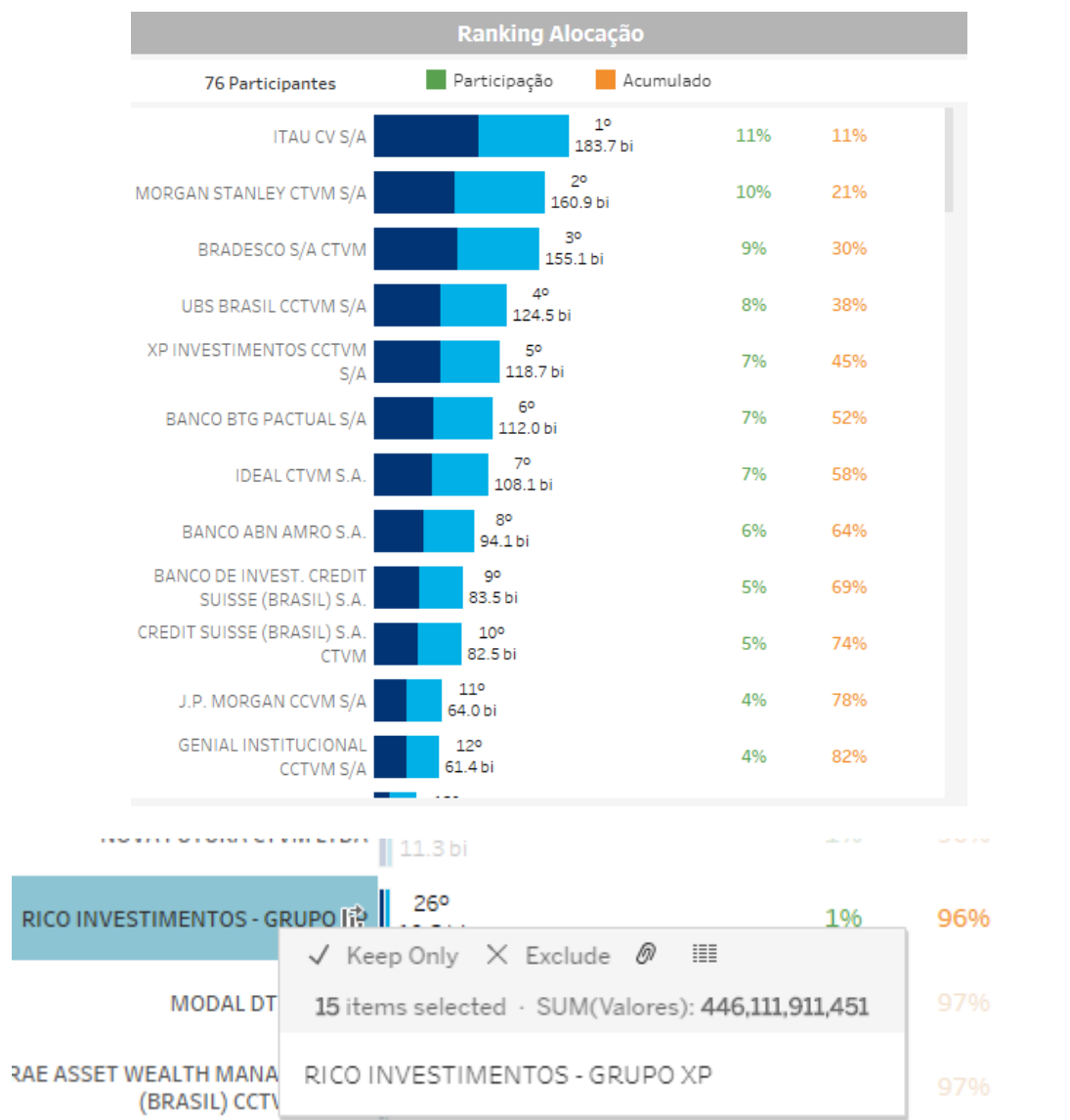
4.3 Time Series Dashboard

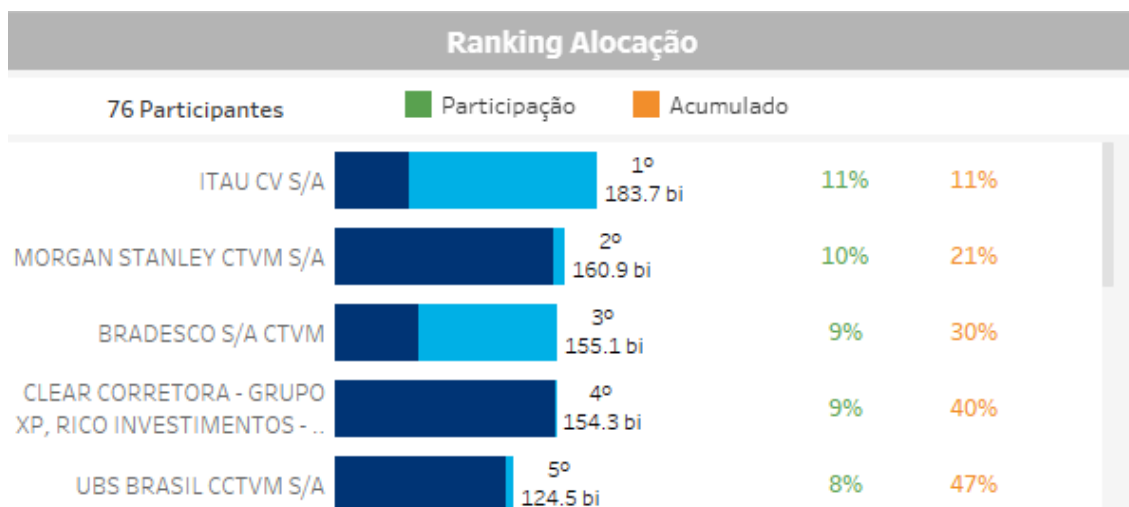
Participante 1
 XP INVESTIMENTOS CCTVM S/A

Participant 1, 2 and 3 – When clicking, you will have access to the names of the institutions and will be able to assess up to 3 participants at the same time.

5 ADDITIONAL FILTERS

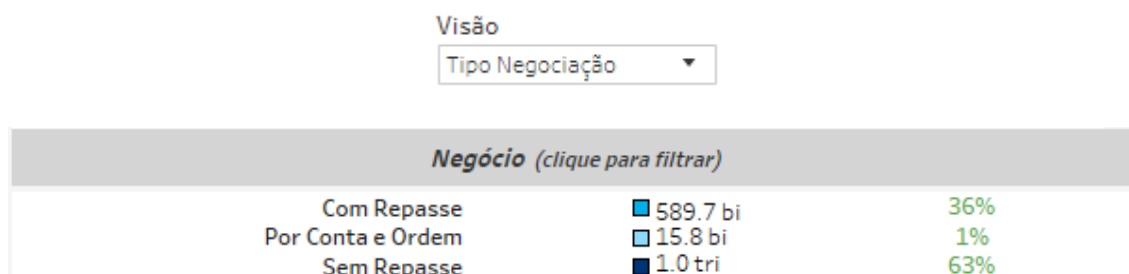
5.1 Groupings





Groupings – In the existing lists in the allocation dashboard where participants are listed, you can group a few institutions based on Economic Groups (e.g. XP Inc, which is made up of the XP, Rico and Clear brokerage houses). To carry out the grouping, it is necessary to keep the Ctrl button pressed and click on the desired squares. When you have finished choosing, bring the mouse closer and a menu will be displayed with different options: Keep Only, Exclude and a symbol that looks like a paper clip (Group Member). When clicking on Group Member, the new grouping will appear in the ranking with the name of all the squares that make it up. Values will continue to be influenced by the selected filters.

5.2 Trading Type



Trading Type – When selecting the Trading Type View, users will have access to trade volumes that were allocated with give-up, without give-up or on behalf and by order.

With Give-up – Values given up from a Full Trading Participant (PNP) to a Trading Participant (PN) or Settlement Participant (PL) to carry out the allocation and settlement of the values.

Without Give-up – Values that were traded and not allocated outside the organization.

On Behalf and By Order – Situation in which a brokerage house trades through another brokerage house on behalf of its client executing orders through that account

6 SERVICE TEAMS

Take a major step and optimize your decision making. Explore our products. If you have any query, talk to our team.

Any query? Talk to us

DATAWISE Sale: produtosdedados@b3.com.br

Contracting: contratacao@b3.com.br

Technical Support: dataservices@b3.com.br